

Supply Chain End-to-End Visibility

Manufacturers, distributors, 3PLs, and other industries seek visibility into their orders, inventory, and shipments to enable better decision-making and gain efficiencies. Leveraging supply chain processes within a control tower solution enables digital supply chain transformation and end-to-end visibility for internal operators and external trading partners, including transportation and service providers. A control tower provides the basis for supply chain visibility by integrating participants, their systems, and data by digitizing operational activities into a single platform.

Key Challenges



The primary challenge to achieving supply chain visibility is there is no typical *single repository* or *single* view of all the relevant data in real time. That lack of congruent solution requires accessing and checking information from multiple and disparate systems to piece together relevant information. No “single version of the truth” hinders reporting and transparency on confirmation, acknowledgments, order status, shipping documents, delivery details, and more. Reporting becomes an incomplete process with no visibility into the full process, status, or synchronized data flow across trading partners.

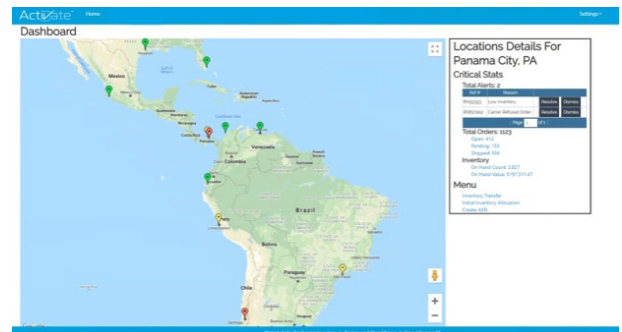
Connecting a broad range of trading partners to allow data sharing presents another challenge to gaining visibility. Connection and integration require flexibility in communication protocols and data structure to connect trading partners that are on highly automated platforms such as EDI, on antiquated systems such as enterprise applications or ERP solutions that have not been modernized, as well as those who rely on passing spreadsheets and emails, and everything in between such as file transports and APIs.

Even with connection, there’s the challenge of information processing. The disparate data and formats require processing to cleanse, translate, normalize, and extend the data to make it usable to gain a common language and ultimately a common view across trading partners.

Addressing Visibility Challenges Results in Significant Insights and Benefits

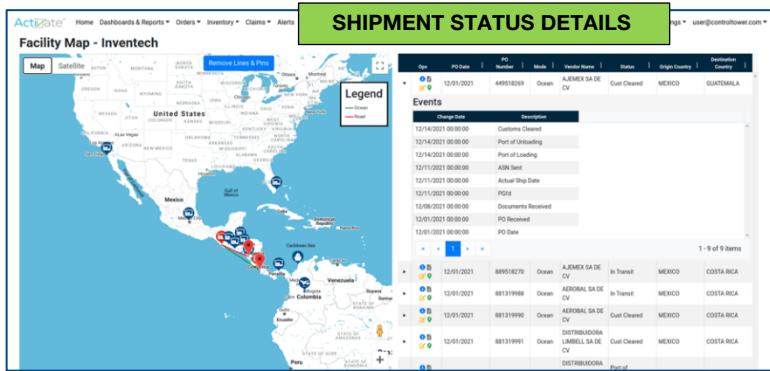
Connecting supply chain participants and gaining a single repository of data to integrate trading partners provides the foundation to synchronize supply, manage orders, and gain visibility to shipment fulfillment in real time. A control tower solution can help companies achieve:

- Advance significant operating improvements
- Reduce cost and cycle times
- Provide more agility to respond to market changes and customer needs
- Improve performance metrics (such as on-time and/or in full)
- Enable the agility to respond to market changes and customer needs



The ActiVate® Platform & Control Tower Solution

ActiV Technologies offers a real-time, cloud-based multi-enterprise supply chain platform, ActiVate®. The platform provides manufacturers, distributors, retailers, or 3PLs and their customers a view of orders, inventory, and shipments consolidated from a variety of ERPs, order management, warehouse, transportation systems, or other disparate systems. ActiVate’s control tower provides:



- Agile, cloud platform
- Rapid connectivity and integration of trading partners (also included library of connectors)
- Single repository or system of record
- Data normalization and data extension
- Automates end-to-end supply chain
- Facilitate rapid identification of exceptions
- Real-time supply chain management
- Trading partner collaboration
- Predictive and prescriptive analytics

ActiVate’s control tower allows internal and external users to see information associated with their role in the supply chain. Each user’s visibility and configured activities/workflow with decision permissions are specific to their sign-on. Participants update orders, add documents, update status information, make appointments, issue transfers, and/or send notifications. Using a single platform allows sharing of shipment, customs, and delivery documents across trading partners. And it provides the ability to match inbound stock orders to outbound customer orders to prevent stockouts, plan labor, or reduce handling in the warehouse enabling a true balance of supply to demand.

ActiVate Control Tower Benefits

- Efficiently manage distributed orders with omnichannel visibility
- Improve fulfillment with inventory visibility across a network or supply chain
- Get real-time order or shipment visibility with alerts on supply chain events to manage exceptions
- Create and analyze scorecards for suppliers and logistics providers
- Gain actionable insight through an end-to-end visible supply chain



“The ActiVate platform allows us to standardize our processes across the region, reduce manual labor, improve the movement of goods out of ports on time including cross-dock vs. putaway capabilities with overall improved supply chain efficiencies.”

– Ana Maria Rueda
HP Inc.

Ongoing Results

In real-world action, the platform solution pulls data from multiple systems for a single point of view and allows users to see and manage orders from global locations. ActiVate provides end-to-end visibility in real-time, sensing changes to demand and associated analytics—the right control tower delivers actionable insights to ensure proactive responses to changing market conditions and sudden disruptions.

Learn how you can swiftly sense, coordinate, optimize, and manage your end-to-end supply chain. Contact ActiV today!